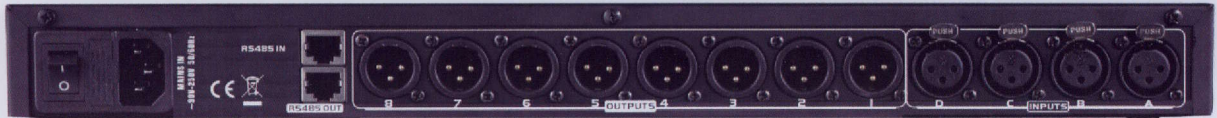


DSP Audio Processor

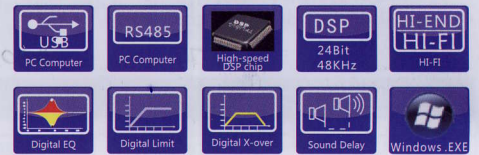
DS418E/216E/214E

Digital Loudspeaker Management



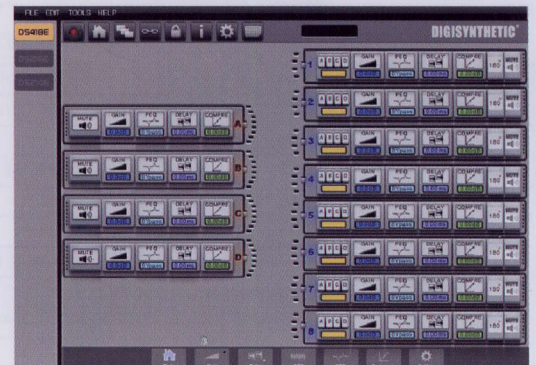
Characteristic :

- High-performance AD / DA DAC chip and high-speed processing DSP chip.
- Friendly and intuitive control interface, control debugging more convenient.
- Improve the function module design, input / output all with volume, delay, EQ, Compressor debug module.
- Input / output have maximum 1S long delay, for a variety of different applications.
- Input / output have seven full-parametric EQ section, to meet a variety of different configurations for debugging.
- Improve accessibility design (digital lock, copy, routing, etc.).
- Sophisticated circuit design, preferably the original. High performance products and safe, and durable.
- Support USB / RS485 communication, can be applied to different environments.



Technical Specifications

Model	DS418E	DS216E	DS214E
Input/output	4in8out	2in6out	2in4out
Input impedance	10kΩ		
Output impedance	50Ω		
Max.input/output level	19dBu		
Input/output gain	-40~12dB, 0.1dB step		
Input delay	0ms~1s, step 21us		
Output delay	0ms~1s, step 21us		
Input PEQ	Each channel has a 7-band parametric equalizer		
Output PEQ	Each channel has a 7-band parametric equalizer		
EQ Gain	-30~15dB, step 0.1dB		
EQ Type	PEQ, Low shelf, High shelf		
EQ Frequency	19.7~21.9KHz		
EQ Bandwidth	PEQ 0.017~4.750 Oct		
Crossover frequency	19.7~21.9KHz		
Crossover slope	FLAT THRU,12dB,24dB,36dB, 48dB		
Crossover classification	Butterworth, Bessel, Linkwitz-Riley		
Compressor threshold	-20dB~+20dB,step 0.5dBu		
Compressor ratio	1.2,1.5,2,3,4,6,10,20,40,128:1		
Attack time	1~100ms, step 1ms		
Release time	50~1000ms, step 50ms		
Dynamic range	116dB A Weighting		
CMMR	>50dB(30Hz~20kHz)		
Crosstalk	<-100dB		
Distortion	0.003%(1kHz,0dBu)		
System preset	10 appearances preset programs, 30 user programs		
Voltage	AC 90V~250V, 50Hz~60Hz		
Weight	3.6kg		
Size	482mm×158mm×45mm		



Outline size

